

WE MAKE IT HAPPEN.

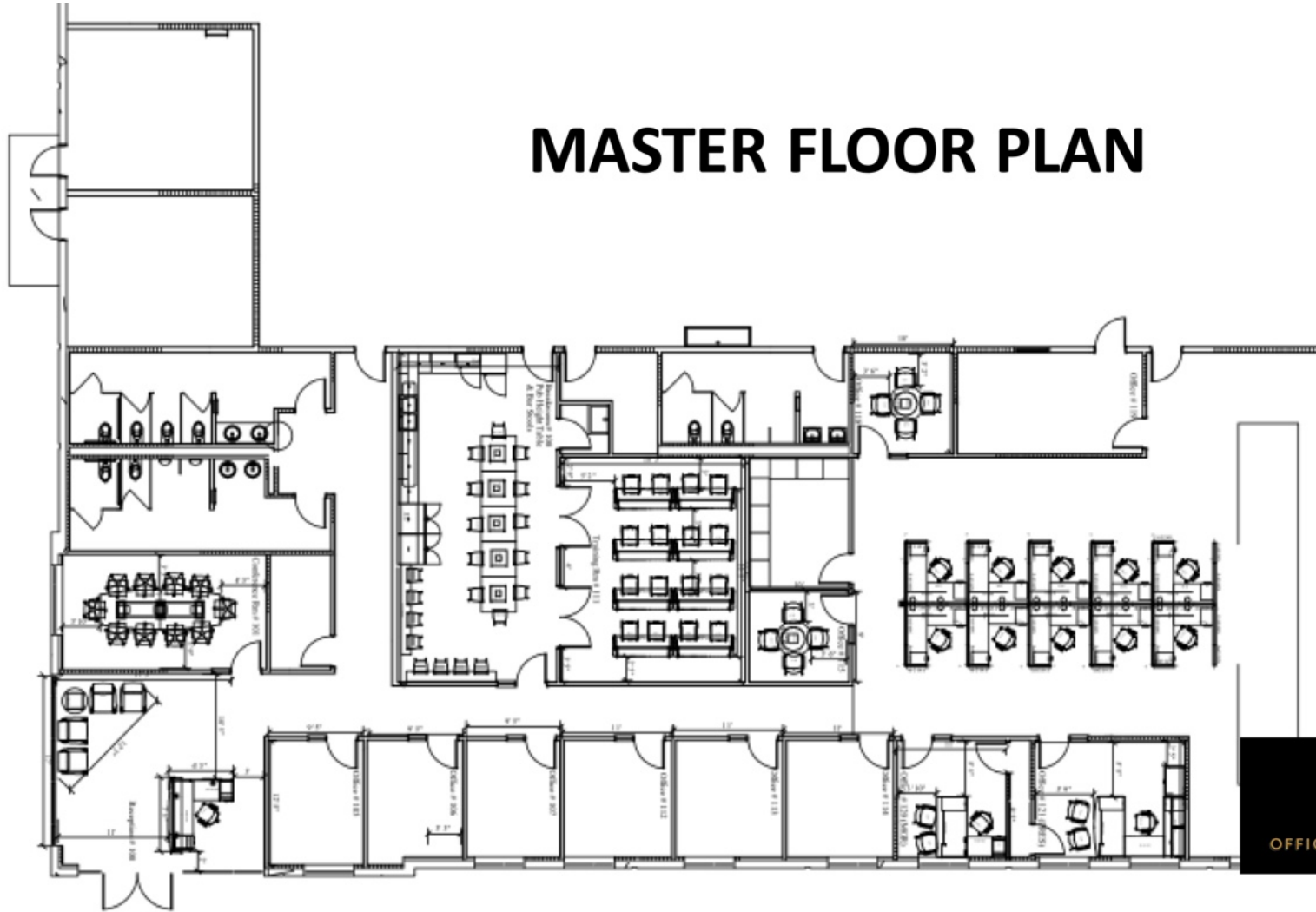


OFFICE DESIGN WORKS

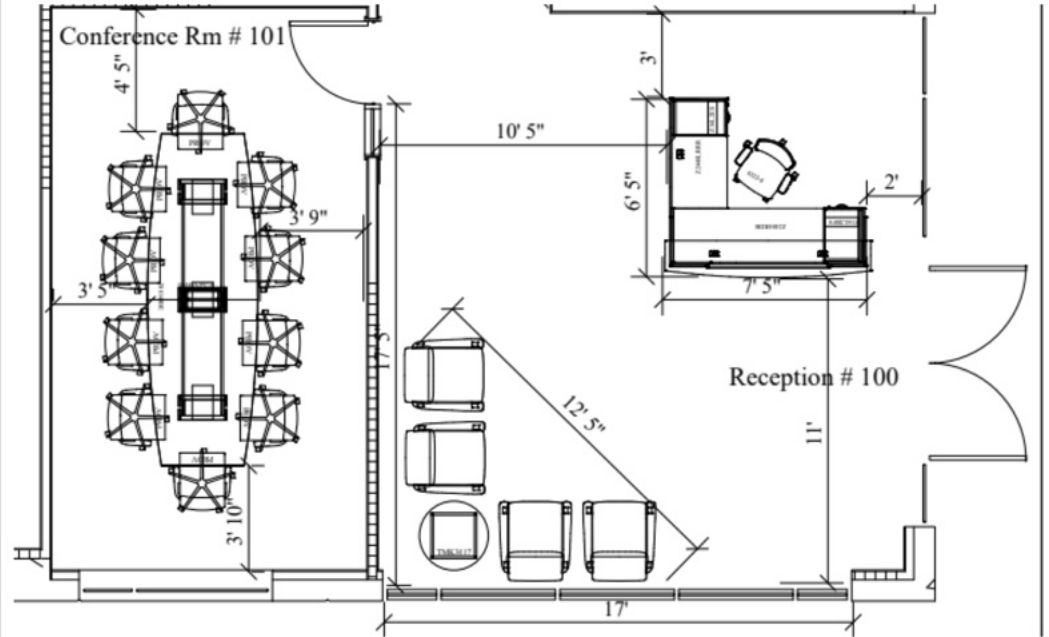
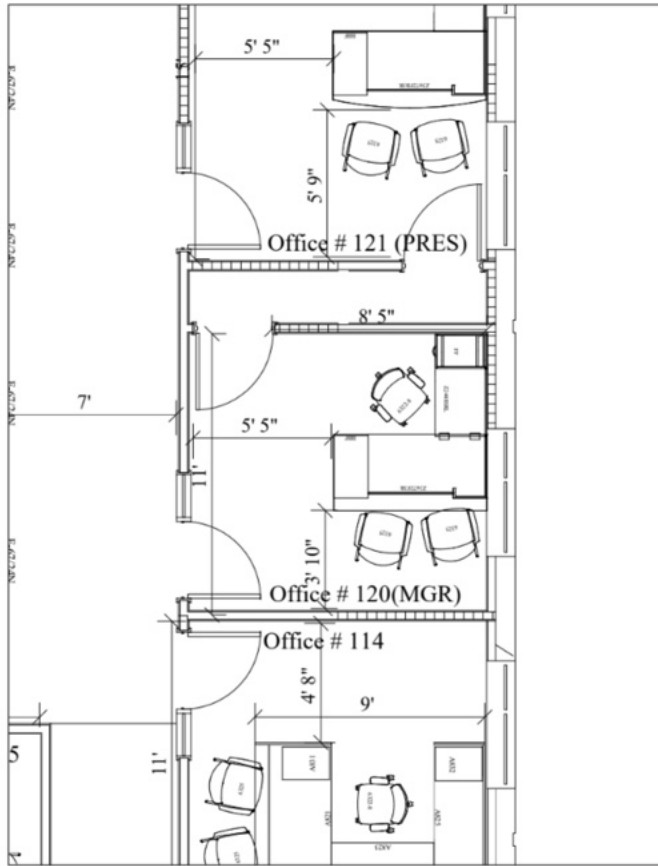
DESIGN ASSISTANCE Lighting Layouts and Lighting Controls Energy Code Compliant Solutions		ESTIMATING & BUDGETING Thorough Review of Specifications and Drawings Provide Accurate, Comprehensive and Timely Quotes
PROJECT MANAGEMENT Proactive Coordination with Vendors and Construction Team Identify conflicting or missing information and resolve problems quickly		LOGISTICAL EXCELLENCE Receive, inventory, and store materials in secure warehouse locations to reduce lead times Custom job site delivery to meet project needs

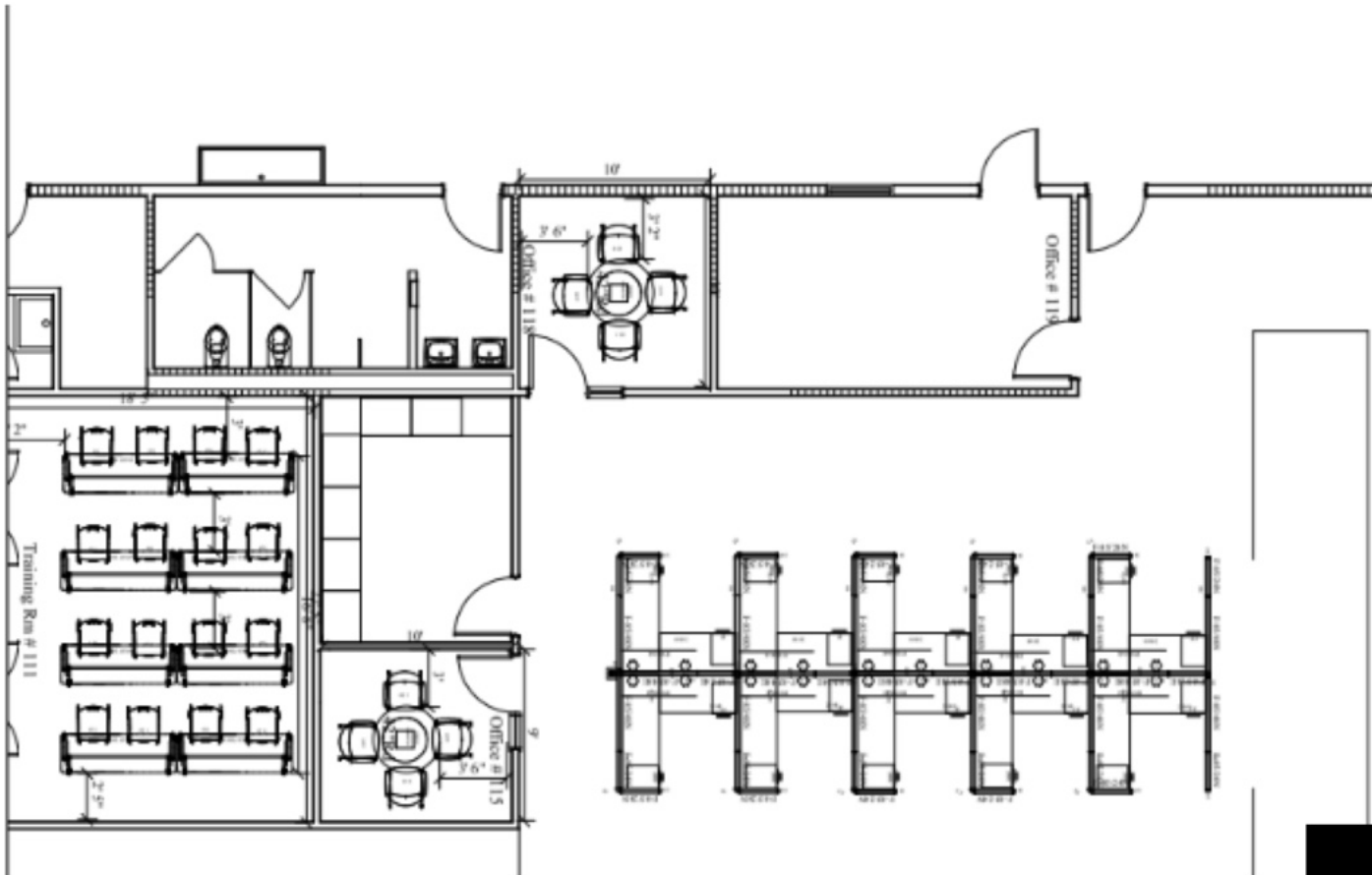


MASTER FLOOR PLAN



OFFICE DESIGN WORKS





FRIANT

SYSTEM 2

Panel System

System 2 is a time-honored classic, combining functionality with affordability. This practical and flexible system has panels that reconfigure as needed to help your team grow or restructure a department easily. System 2 is an economical solution to all your office environment needs, also available on our 10-Day Quickship program in more than 20 fabrics and finishes.

friant.com/systems-2



OFFICE DESIGN WORKS

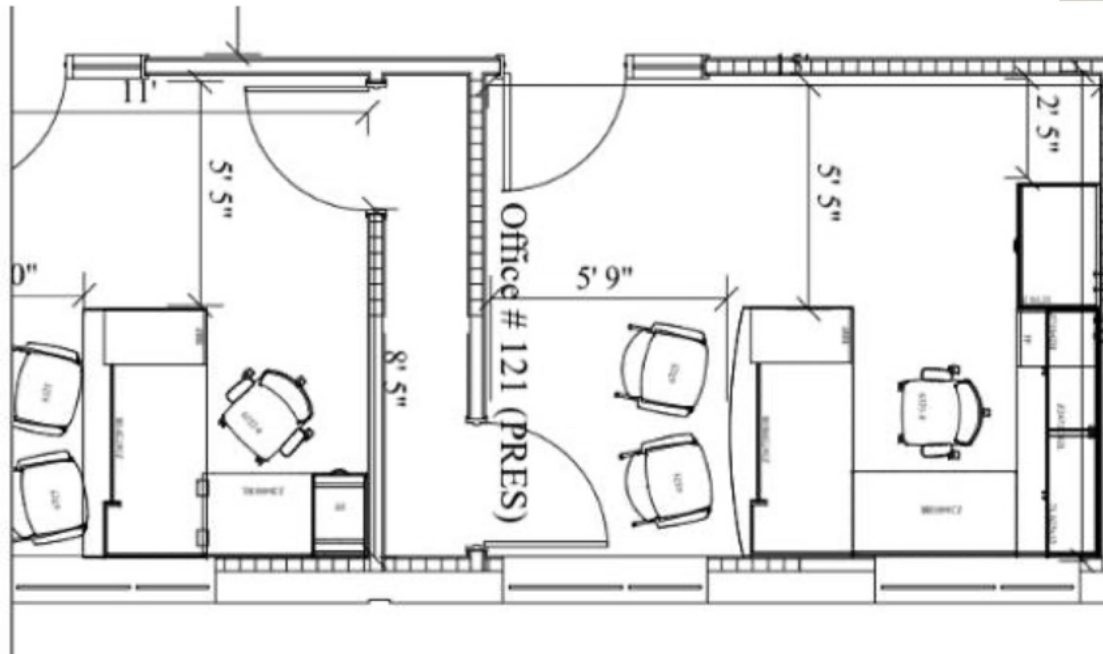


ZIRA

DESKING

Zira has a wide range of models and options that can provide both a traditional or contemporary appearance and layout. The open metal leg for worksurfaces and returns creates a modern look that integrates perfectly with a wide range of open and closed storage options. Zira has the right t for any working style.

Absolute Acajou UAG3





Zira™

Tables provide a place to connect and collaborate with colleagues. Media, boardroom and collaborative tables fit the way you work. Power and technology options may be specified in table tops. Audiovisual components: multimedia cart, lectern, visual board. Complementary Buffet components: buffet cart, serving cart and buffet. Bases with doors are fully accessible from either side. Work surface grommets available in Black only. Dimensions: W144 x D48 x H30 IN.

Zira

Features



Power block (closed)



Multiple power block configurations available (open)



Grommet



Easy access to wire management



1.5" standard flat edge



1.5" bicut edge



1.5" fluted edge



The Bungee family - versatile, efficient, economical

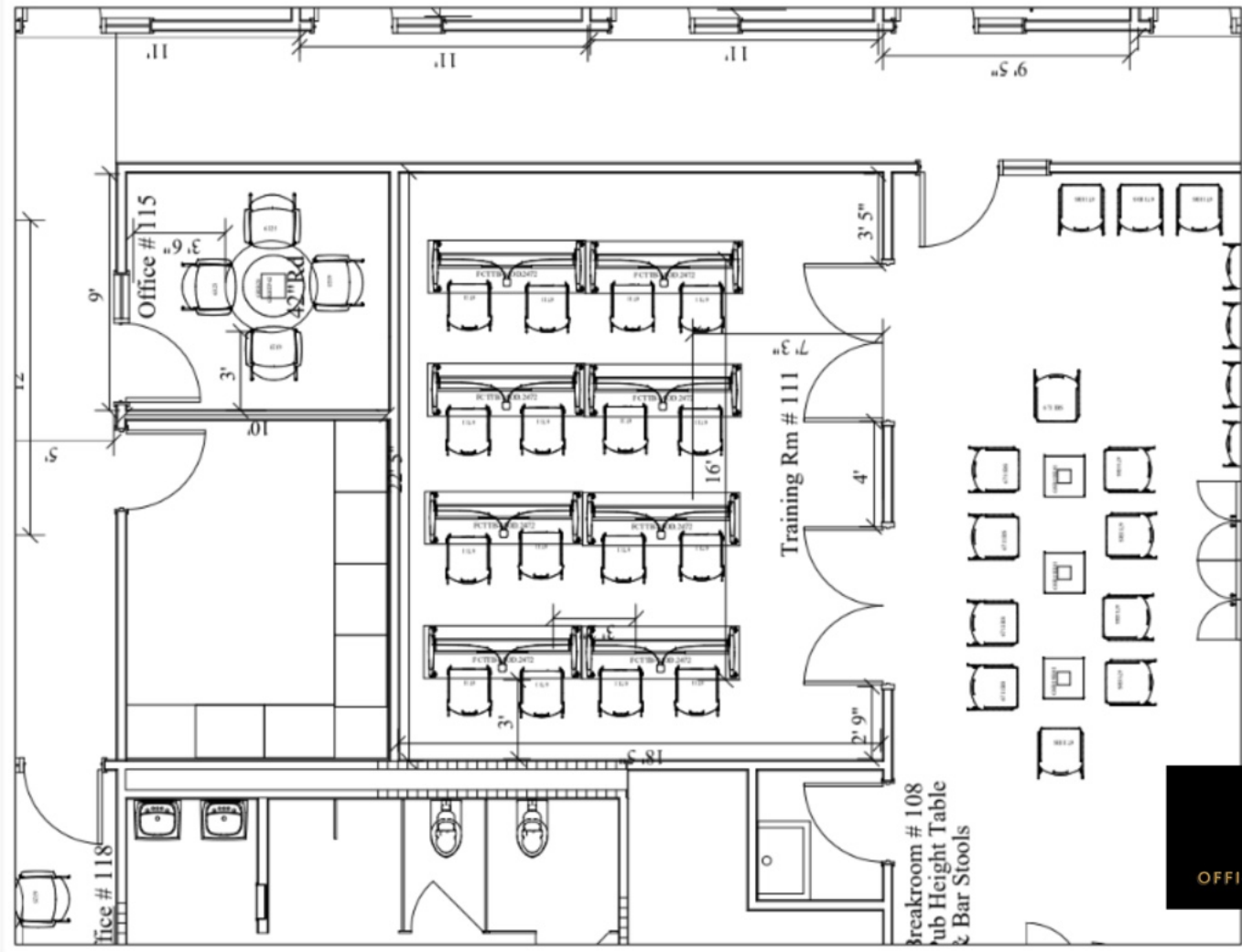


It's in the details



Simple and easy to use





Features and options



Handhold for ease of stacking



Back cut-out for easy cleaning



Upholstered seat models available



Color matched arm models available



Optional ganging brackets



Optional gliders available (clear polycarbonate glider shown)



Medium density transportation dolly for upholstered or polypropylene chairs



High density transportation dolly for polypropylene chairs only

A lightweight performer



Transform any space into a great place



Color it your way



Available in a range of contemporary colors with matching arms. Optional gliders and ganging brackets are available. Designed by Zoëy Chu.

Stack and store



Use both feet and



Use both feet and



Use both feet and



Use both feet and



A high performer



Meet anywhere



Gather naturally





Join the conversation



It's a simple thing done right



Features



Matching edge on all sides



Power management in select columns



Optimal wire management grommets on select skins



Factory installed metal inserts for easy metal-to-metal base connection



Leveling glides standard on all bases



1/2" thick steel square and round metal bases



Optional power and data modules on select skins

Base finishes



Chrome



Brushed Chrome



Tungsten



Designer White



Black

Tables





EVOLVE Series
Executive/Conference/Guest



SITWELLNEXT



FEATURES:

- In-stock 48 hour Quick Ship
- Chrome frame with black, white or grey synthetic leather cover
- Ships KD with assembly required

SPECIFICATIONS:

EV-25	Seat	19" W x 17.5" D
	Seat Height	18.5"
	Back	18.5" W x 19" H
	Overall Height	36"
EV-35	Seat	19" W x 17.5" D
	Seat Height	18" - 21.5"
	Back	18.5" W x 19" H
	Overall Height	36" - 39"
EV-45	Seat	19" W x 17.5" D
	Seat Height	18" - 21.5"
	Back	18.5" W x 26" H
	Overall Height	43" - 46"



AVAILABLE IN:



Cover Models: E-45 grey (left)
E-35 White (top center)
E-35 Black (top right)
E-25 white (bottom right)

SITWELLNEXT

14815 Radburn Avenue
Santa Fe Springs
California 90670
Web: sitwell.com

Toll Free: 866.624.4968
Local: 362.802.0464
Fax: 866.624.9662
E-mail: customerservice@sitwell.com





VION

Make it fit





DeMontrond
CONROE • HOUSTON • TEXAS CITY

 Centurion Pipeline L.P.



HPO Global  HPO Global Resources Ventures Inc

ALFRED TALKE
Logistic Services

 DLTRADING



Davita
bringing quality to life™



KIDDIE 
ACADEMY.
EDUCATIONAL CHILD CARE



HOME 2
SUITES BY HILTON

SYNERGEN X

 Ervin Cable Construction, LLC

flnb First Liberty National Bank