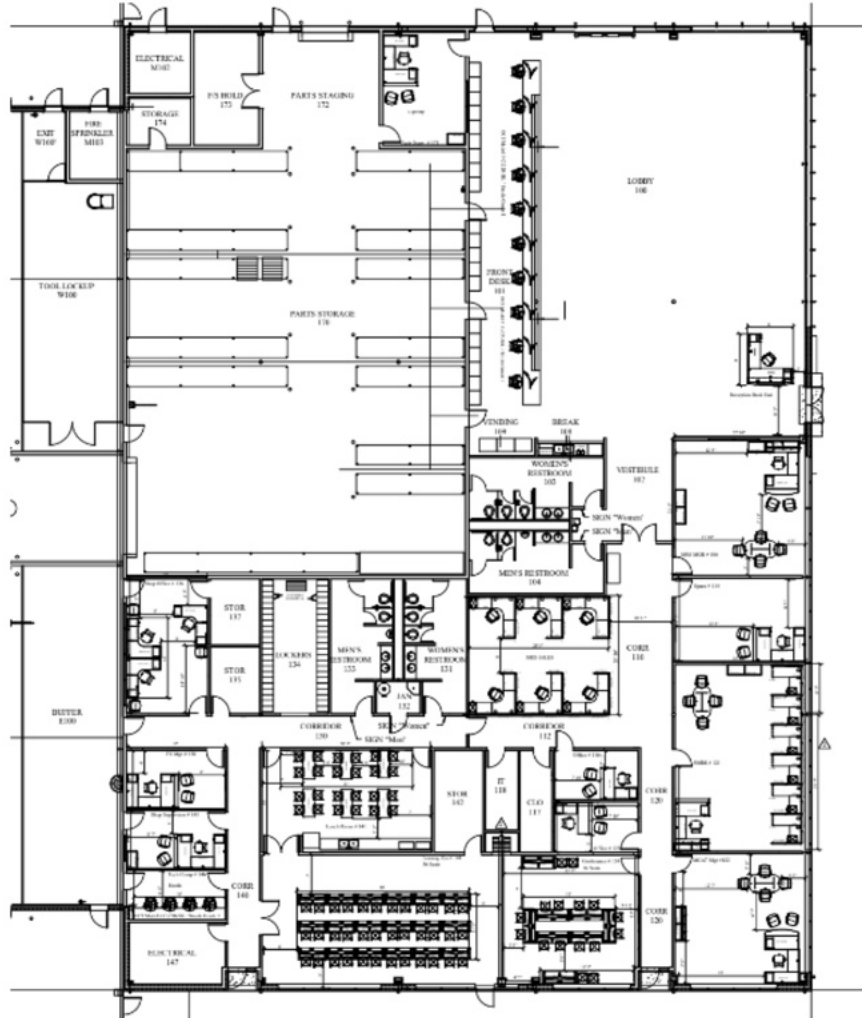


**MUSTANG** **CAT**







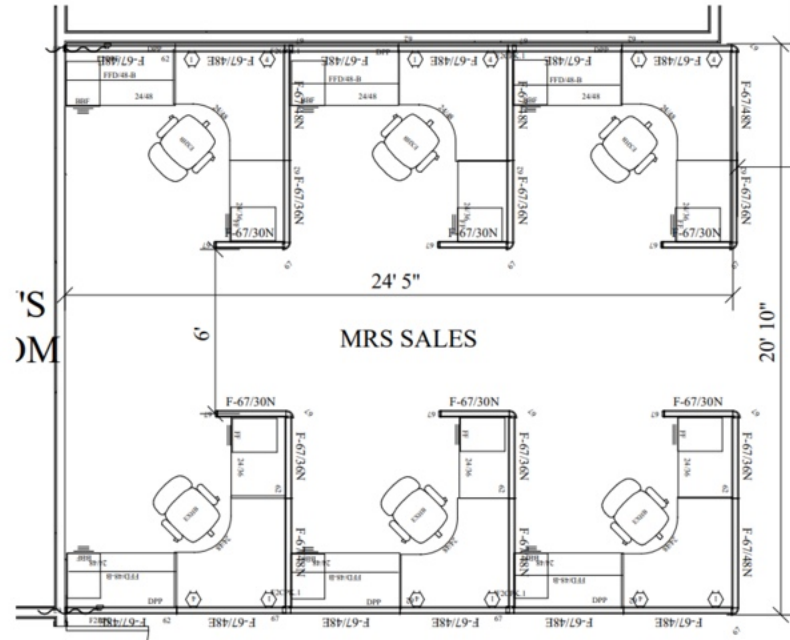


**FRÍANT**

## SYSTEM 2

### Panel System

System 2 is a time-honored classic, combining functionality with affordability. This practical and flexible system has panels that reconfigure as needed to help your team grow or restructure a department easily. System 2 is an economical solution to all your office environment needs, also available on our 10-Day Quickship program in more than 20 fabrics and finishes.



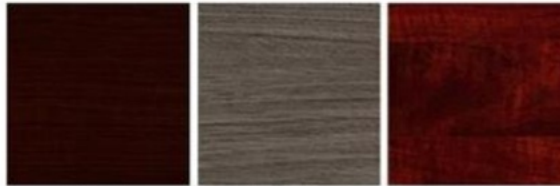
### A Classic Look for your Workspace

**System 2** is a time-honored classic. A sturdy monolithic panel system, with easy installation and practical functionality. The classic design featuring our honeycomb core construction provides the durability and flexibility to meet the needs of any office environment. System 2 is available in all standard Friant fabrics and laminates, making it simple to create a consistent look throughout your office.

### Features & Benefits

- Partial glazed panels
- Frameless glass available
- Powered and non-powered panels
- Laminate, fabric and acoustical panels
- Available even faster through Quickship
- Lifetime Warranty to original owner

Offices to Go



Espresso

Artisan Grey

Dark Cherry

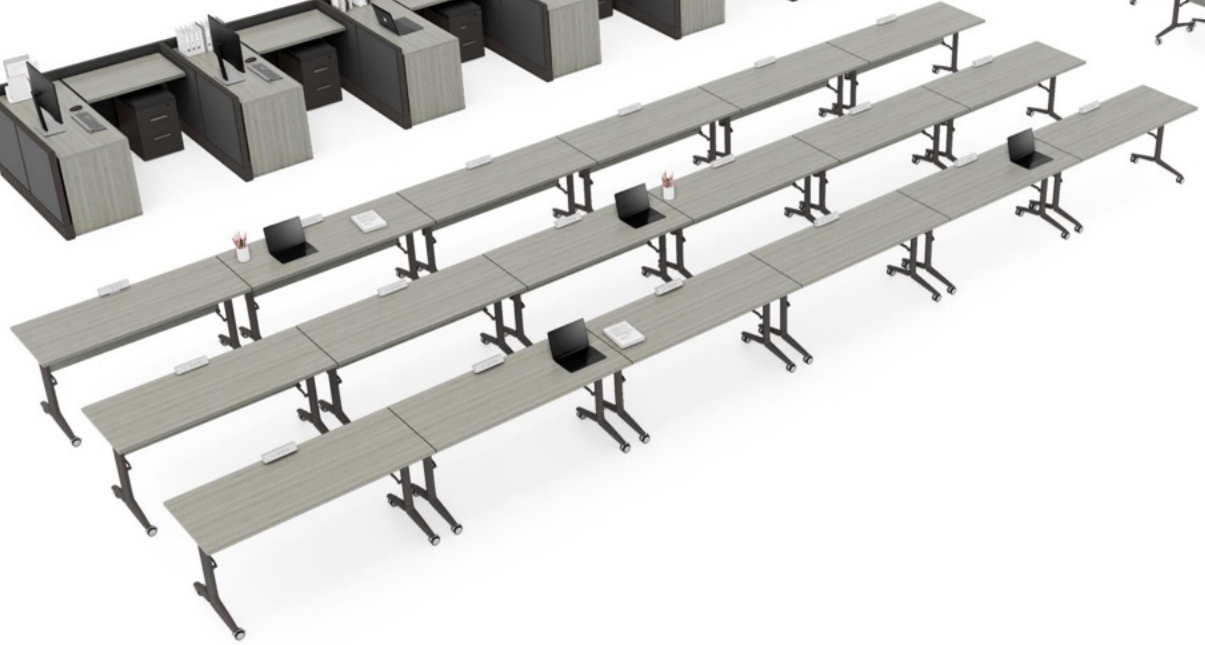


Mahogany

Walnut



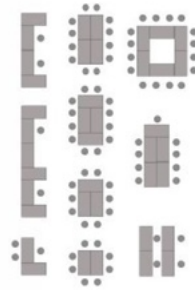
- Contemporary finishes all accented with 3mm matching impact resistant edges.
- Box and file drawers feature full extension ball bearing drawer slides.
- Lateral files and file/file pedestals come equipped with a mechanical safety interlock.
- Pedestals, lateral files + multi-storage files are designed to connect to the appropriate desk, credenza + return shells.
- Metal pins + cam fasteners are designed for easy assembly (where applicable). Metal brackets (where applicable) are also included for additional strength and rigidity.



- **Introducing the Lune Training Table**
- A design-forward solution for multi-use environments.



Form and  
Function.



## Lune Training Table Flexibility and ease of motion make these tables easy to setup and configure into a wide range of spaces.

### Lock/Unlock Control Mechanism

The simple flip-top mechanism is designed for single-handed operation

### Aluminum Column and Cold-Rolled Steel Beam

Base components provide added strength to the Lune table base with die-cast aluminum design

### Castor with Brakes

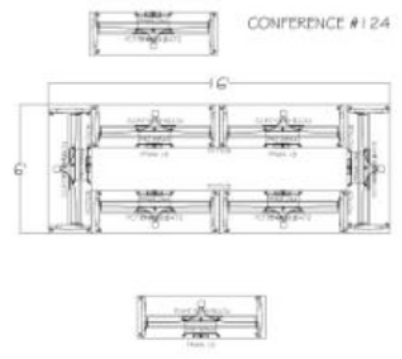
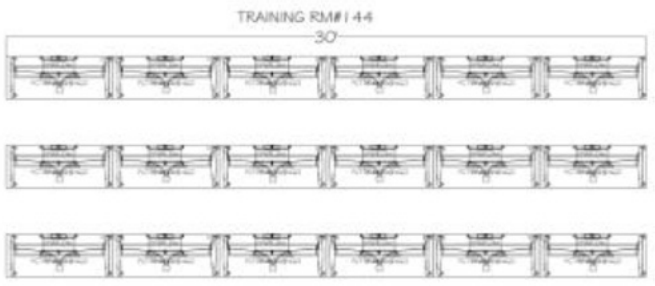
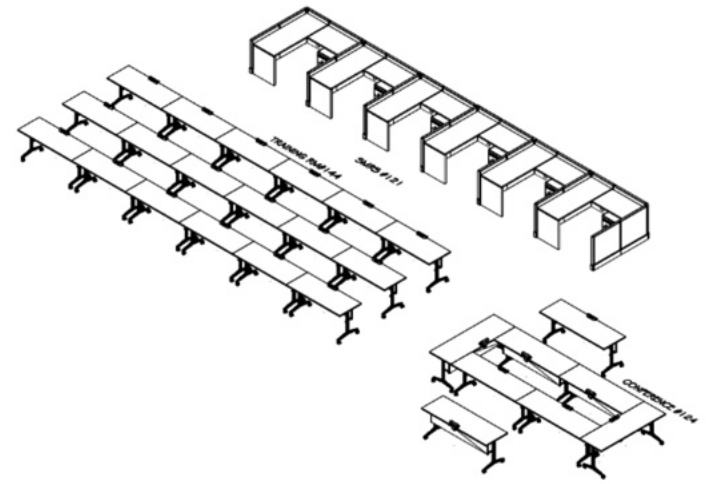
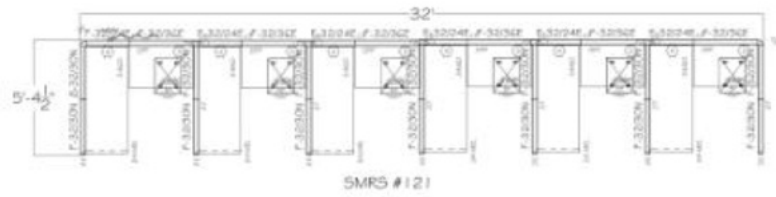
Quickly and easily lock the table in place. Easy-glide castors make for nonstick and easy movement



### Modesty Panel

Add optional privacy to any of our work surfaces. On 72" tops, modesty panels are required





**OfficesToGo**

## OFFICE CHAIRS

### OTG11980B

#### Mesh Back Synchro-Tilter

- Black mesh back with patterned Black fabric seat (stocked)
- Pneumatic seat height adjustment
- Height adjustable arms with polyurethane armrests
- Synchro-tilt chair control with tilt tension adjustment
- Single position tilt lock
- Twin wheel carpet casters

#### Features:



Tension Adjustment



Chair Tilt Lock



Seat Height Adjustment



Arm Height Adjustment



Synchro Tilt Movement



Waterfall Seat Edge



Properly Contoured Cushions



**OfficesToGo**

## TASK CHAIRS

### **OTG12112B**

#### Mesh Back Tilter

- Black mesh back with Black Luxhide seat
- Pneumatic seat height adjustment
- Height adjustable arms with polyurethane armrests
- Single position tilt lock with tilt tension adjustment
- Twin wheel carpet casters

**Features:**



Tension Adjustment



Chair Tilt Lock



Seat Height Adjustment



Arm Height Adjustment



Waterfall Seat Edge



Properly Contoured Cushions



Center Tilt Movement



**OfficestoGo**

## CONFERENCE CHAIRS

### **OTG13026B**

Low Back Mesh Back Tilter w/ Luxhide Seat

- Black mesh back with black Luxhide seat
- Pneumatic seat height adjustment
- Fixed "twisted ribbon" molded arms
- Single position tilt lock with tilt tension adjustment
- Scuff resistant high-rise base with twin wheel carpet casters

**Features:**



Tension Adjustment



Chair Tilt Lock



Seat Height Adjustment



Arm Height Adjustment



Waterfall Seat Edge



Properly Contoured Cushions



Center Tilt Movement



## GUEST CHAIRS

**OfficestoGo**

### **OTG3918B**

Arm Chair

- Black fabric upholstered seat and back
- Comfortable polyurethane arms
- Black epoxy powder coated steel frame
- 4 leg design



**OfficestoGo**

## OTG Stackable Chairs



Impact resistant Black plastic seat and back (one piece) •  
Chrome plated steel rod frame • Can be stacked 8 high on the  
floor or 24 high on available dolly (OTG11311B) • Packed 4 chairs  
per carton (priced each) • Greenguard certified •



**DeMontrond**  
CONROE • HOUSTON • TEXAS CITY

 Centurion Pipeline L.P.



**EQ**  
EnQuest



**HPO Global**  HPO Global Resources Ventures Inc

**ALFRED TALKE**  
Logistic Services

 **DLTRADING**



*Davita*  
bringing quality to life™

  
**LOTUS**  
MIDSTREAM



**KIDDIE**   
**ACADEMY**  
EDUCATIONAL CHILD CARE



**HOME**   
SUITES BY HILTON

**SYNERGEN** X

 Ervin Cable Construction, LLC

**fnb** First Liberty National Bank